

PART OF THE S. 1/2 OF SECTION 29, AND N. 1/2 OF SECTION 32, T.7N., R.1W., S.L.B. & M. &  
PART OF LOTS 14 & 40, PLAT "B" NORTH OGDEN SURVEY

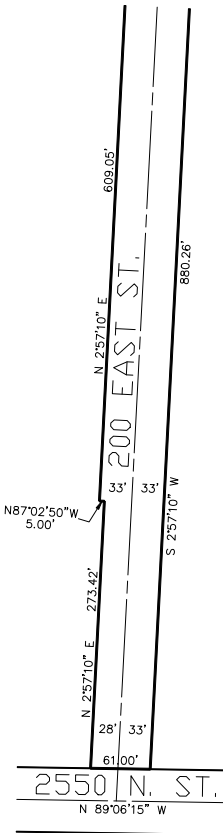
NORTH OGDEN RANCHETTES - UNIT 1

TAXING UNIT: 10

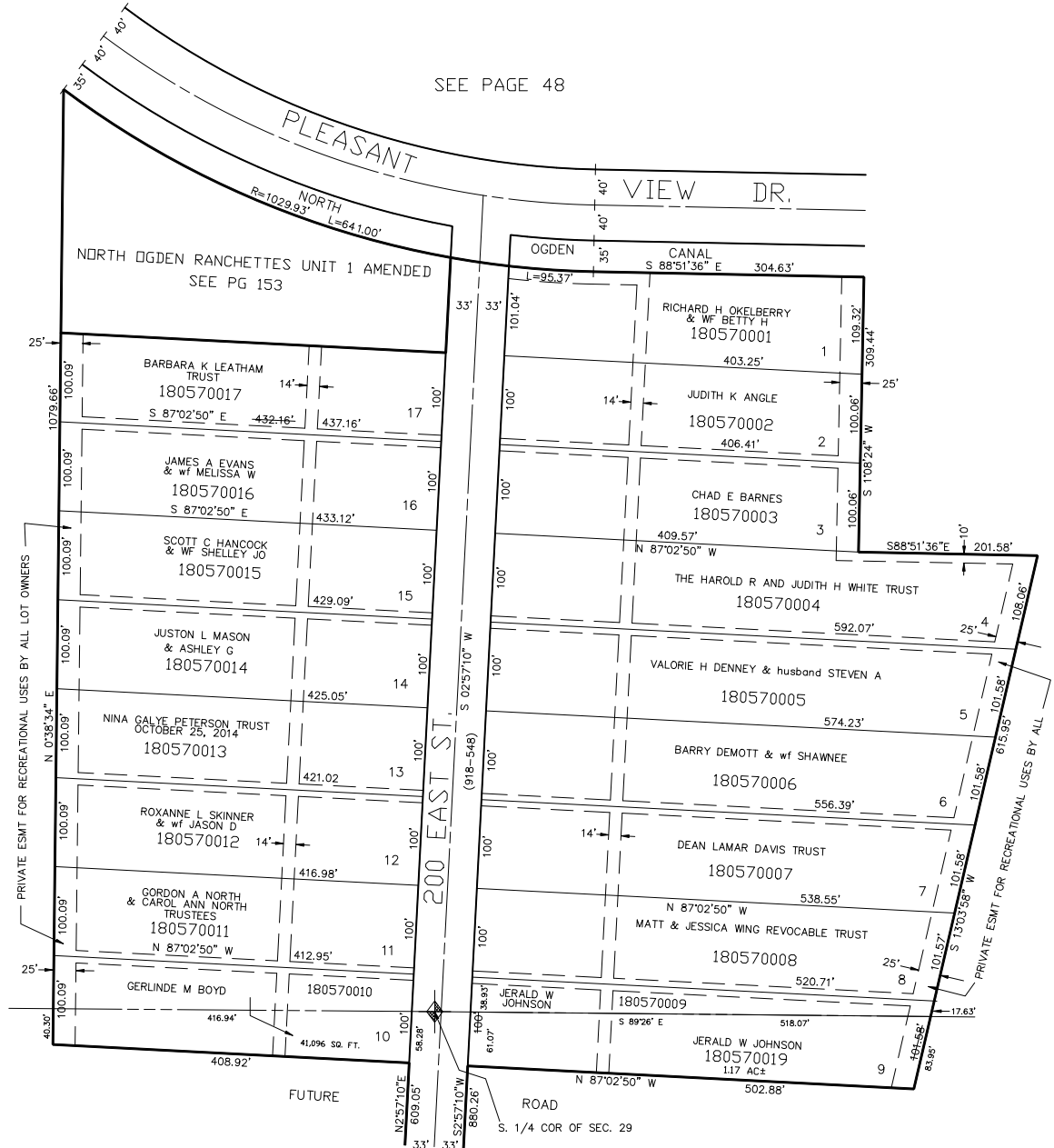
IN NORTH OGDEN CITY

SCALE 1" = 100'

SEE BELOW AT RIGHT



SEE BOOK 17, PAGE 50



SEE PAGE 48

SEE PAGE 48

25' PRIVATE EASEMENT FOR RECREATIONAL USE BY ALL LOT OWNERS

SEE ABOVE AT LEFT

7' UTILITY & DRAINAGE EASEMENTS EACH SIDE OF PROPERTY LINES AS INDICATED BY DASHED LINES EXCEPT AS OTHERWISE SHOWN.